



**Your Account Login:**

GOTO: [www.AlopekLogin.com](http://www.AlopekLogin.com)

PIN: **track**

User: \_\_\_\_\_

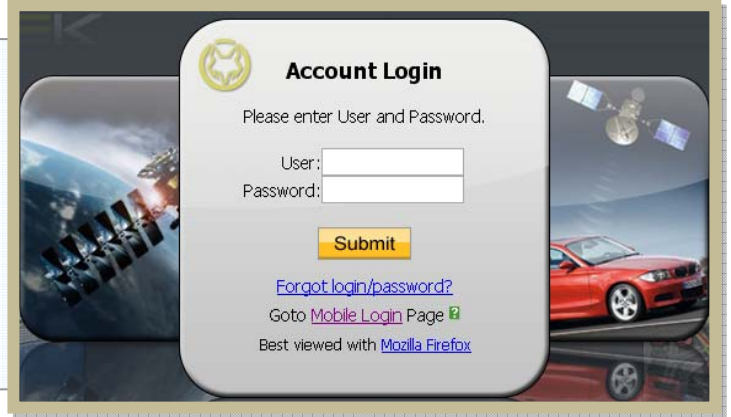
PW: \_\_\_\_\_

**Alopek, Inc** | 642 South Military Trail, Deerfield Beach, FL 33442 Phone **954-234-2397** [www.Alopek.com](http://www.Alopek.com)

\*We strongly recommend using FireFox Web Browser, which is a simple & free download from [www.FireFox.com](http://www.FireFox.com)

**To LOGON to your account goto:**

- 1** [www.AlopekLogin.com](http://www.AlopekLogin.com)
- 2** Enter Pin-Code: **track**
- 3** Enter your **Username & Password**, then Click SUBMIT button to continue



**EASY TO USE ONLINE APPLICATION**

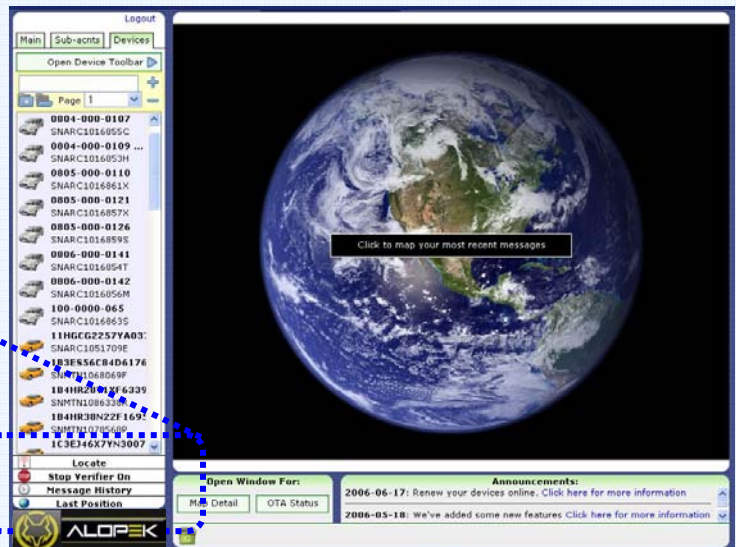
After successful Logon, the Home Screen is displayed.

- Single click on a device (from DEVICES tab –top left of screen) & single-click any of the Home Screen Commands

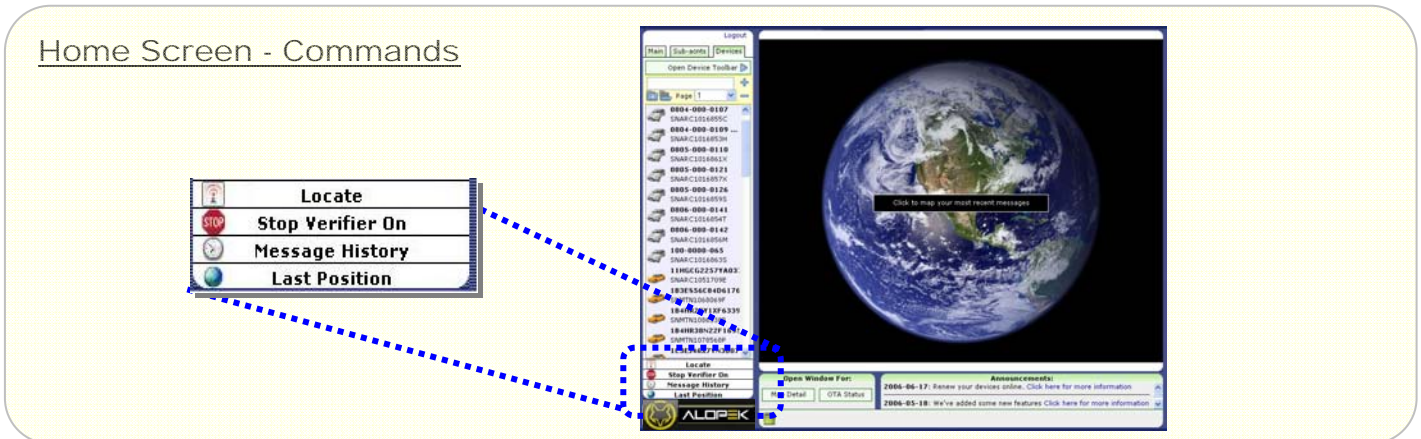
Home Screen

- Location and History command functions are available as shown below

**HOME SCREEN COMMAND FUNCTIONS**



# ----- QUICK REFERENCE USER-GUIDE -----



\*Single-Click to select on any of the command functions

## ■ Locate

Single-click to select your vehicle from the list (DEVICES Tab), then single-click *Locate*. The map will display current position within approximately 15 seconds or less.

## ■ Message History

Review history of your assets in text/table format. (Unlimited History is available)

## ■ Map Last Positions

Click to view the Last Positions on the Map with a MINI-HISTORY displayed below the map, where you can also select and view previous history locations on map.

Last Position - with Mini-History



## ■ Stop Verifier On

Selecting this command will "Automatically Locate" your vehicle/asset when it has been parked for 4 hours. It will repeat this action a total of 8 times.

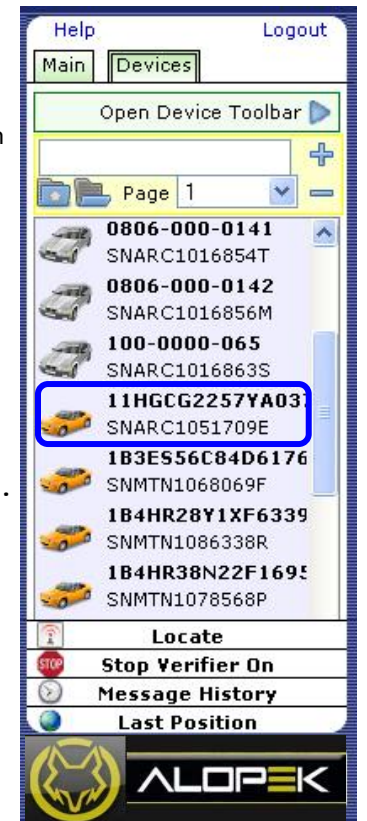
\*Provides owners an automated location History for Inventory & Recovery use.

## CHANGE DEVICE DESCRIPTION

**Double-Click** on the Device in the DEVICES list, and select **DESCRIPTIONS**.

- click **EDIT** to change the device *Name* and/or device *Icon*.
- click **UPDATE** when finished making changes.

\* **UNLIMITED History Messages** are always available with your account.



### Weekly Automatic-Location

A weekly AUTOMATIC-LOCATION is performed on each of your devices and recorded into account history.

